



ARTIST

AIBERT RENGER-PATZSCH



## RESEARCH

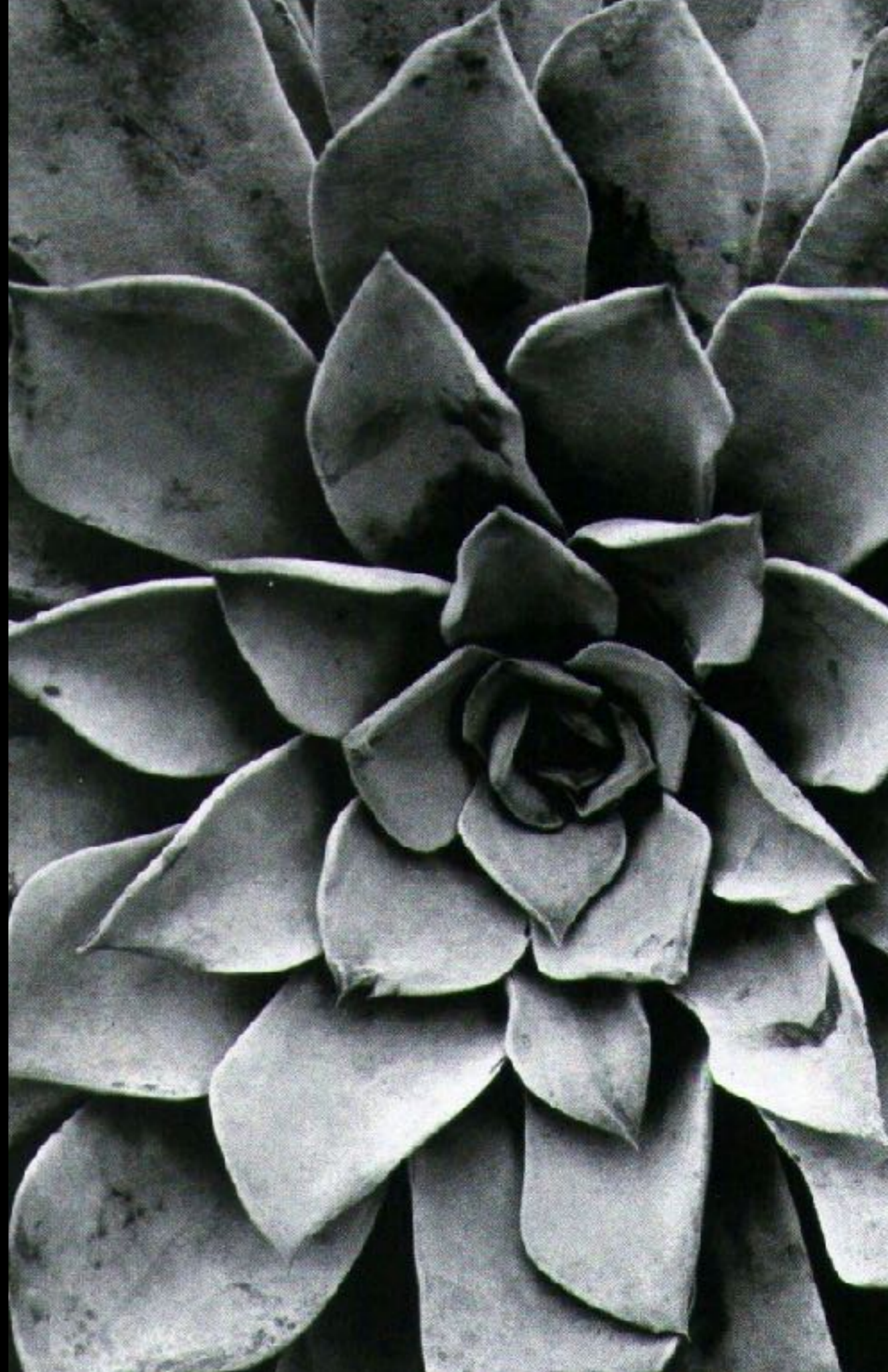
- Renger-Patzsch was born in Würzburg and began making photographs by age twelve. He served in the military the majority of the First World War, while he studied chemistry at Dresden Technical College. In the early 1920s he worked as a press photographer for the Chicago Tribune, later on in 1925, publishing a book about photography. His found love for photography allowed him to have an exhibition in 1927 that was highly successful, with themes linked to that of war inspired by his time in World War One.
- His second book was called *The World is Beautiful* and included mostly images from outside focusing on details of nature. This is also his best known book. Other themes in the book focused on that of the industrial revolutions at the time, illusions based upon mass products and machinery.
- His work is sharply focused and matter-of-fact. His work exemplifies the aesthetic of *The New Found* that flourished in the arts in Germany during the War. Renger-Patzsch believed that the value of photography was in its ability to reproduce the texture of reality, and to represent the essence of an object. His greatest quote is "The secret of a good photograph—which, like a work of art, can have aesthetic qualities—is its realism ... Let us therefore leave art to artists and endeavour to create, with the means peculiar to photography and without borrowing from art, photographs which will last because of their photographic qualities."





## PERSONAL REPSONSE

- I want my photo shoots to capture his use of shades and detail that he effortlessly captures so well. I also want to concentrate on his death and captures realism, his work to me also connotes some pain and hurt in his life that he is trying to express through his artwork. This effortless spiral patterns capture the light highlights and create some delicacy and also rugged texture in the shaded areas. I want to use his own reflection of war and pain in his art from a more modern angle of outside nature and modern industrial streets accompanied with editing to connote pain and hardship.



# MIND MAP

CAPTURE A  
REPEATABILITY  
AND MARKS WITH  
NATURE LINES  
AND PATTERNS  
BUILT INTO THE  
WILD

FOR THE OBJECT IN  
PHOTOSHOOT THREE  
TO HAVE AN  
OVERLAPPING SENSE  
OF LIFE AND SPIRIT  
AND EXAGGERATE  
THE TEXTURE

COMPOSITION IN  
ORDER TO TAKE  
DIRECT DETAIL AND  
SHADING

EDIT IN SUCH A  
WAY TO GET THE  
SAME DARKER  
MELLOW TONES  
ALTOGETHER

RENGER-PATZCH

A SENSE OF  
BELONGING  
AND PLACE  
WITHIN EACH  
PHOTOGRAPH  
AS IF  
EVERYTHING  
WAS THERE  
FOR A REASON

CAPTURE A SENSE  
OF LIFE AND MAKE  
EACH PHOTOSHOOT  
VERY UNIQUE AND  
UNLIKE THE OTHER  
BUT STILL  
DEVELOPING HIS  
THEME AND TONES

CONCENTRATE ON  
DEVELOPING A THEME  
OF VENERABILITY AND  
SEXUALITY WITHIN THE  
PLANTS AND  
BUILDINGS



# MOOD BOARD







## FIRST SHOOT MAIN INSPIRATION

### CLOSE UP OF NATURE SUCH AS LEAVES AND FLOWERS

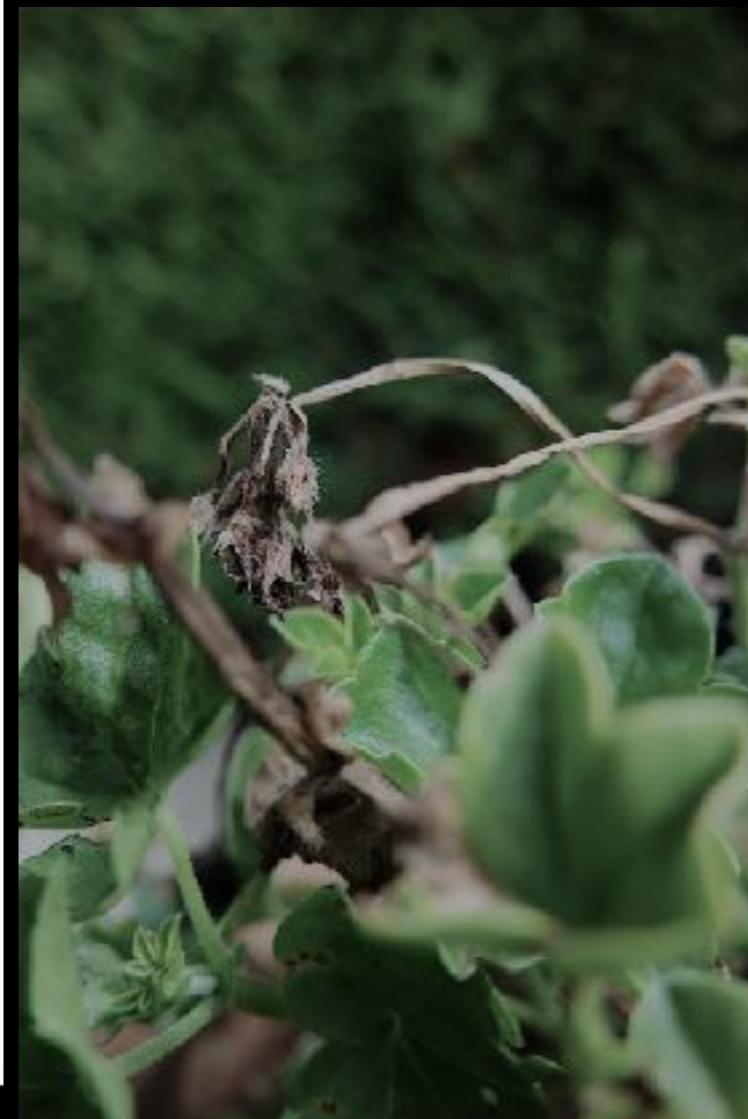
- For this shoot I want to focus on the lines shading and shapes' will then edit the photos to some black and white to emphasise the different shades and textures found in the leaf. some of these images connote a sexual undertone in the richness and shaping in quite an almost provocative manner.

- INSPIRATION

- my inspiration from the shoot is the detail and realism within all the leaves and how i have edit and develop



## CLOSE UP PHOTOSHOOT



THIS PHOTOSHOOT WAS VERY SUCCESSFUL I WAS EASILY ABLE TO CAPTURE AN ARRAY OF EFFECTS' USED A VERY CLOSE UP SHOT (MACRO) AND FOCUSED TO REALLY GRAB THE REALISM AND DETAIL THAT I WANTED, BECAUSE OF THIS I HAVE VERY NICE LINES AND DETAIL IN MY WORK WHICH IS ALSO VERY LIKE THE ARTIST.THE BEST WORK ON THIS IS THE EDITING AS IT BRINGS A NEW ATMOSPHERE AND ALSO DEVELOPS THE SENSE OF VULNERABILITY

BEST PHOTOS













BEST PHOTO FROM SHOOT



I REALLY LIKE THIS PHOTO DUE TO ITS OVERLAPPING LINES AND CONTINUOUS MOVEMENT, IT HAS A VENERABILITY SENSUALITY IN THE SHOPPING OF THE LEAVES, IT IS VERY SIMILAR TO THAT OF THE PHOTOGRAPHERS WORKS. THE EDITING DEVELOPS THE TONES AND SHADES AND HAS A VERY CLASSIC CONTEMPORARY FEEL TOWARDS THE IMAGE







SECOND SHOOT  
MAIN INSPIRATION

PARALLEL CITY'S, WOODS, STREETS, SOCIETY  
IN INDUSTRIAL



for this shoot I wanted to capture the lines and effects of architecture and also the streets full of different people and the continuation effect that you can capture. I edited my images so that they had the same colour and tonal range as the inspired photographer. I also blackened out the people with I feel creates an atmosphere of suspense and demonstrates that of art in the modern world.















## MOST SUCCESSFUL SHOT FROM SHOOT

I wanted an angle to this image to show the pure velocity and massiveness the building, it begins to create a presence and an effect of power much like the focus on the industrial war prone inspiration. The editing was to bring a deeper tone and enhance the details and create a more atmospheric sky that creates suspension and a persona to the building itself. I like the development of the darker tones lessening and lighting towards higher-up in the building, this allows more natural light to capture and enhance the Beauty itself. I wanted to capture the line within the wall and the structure of the building.