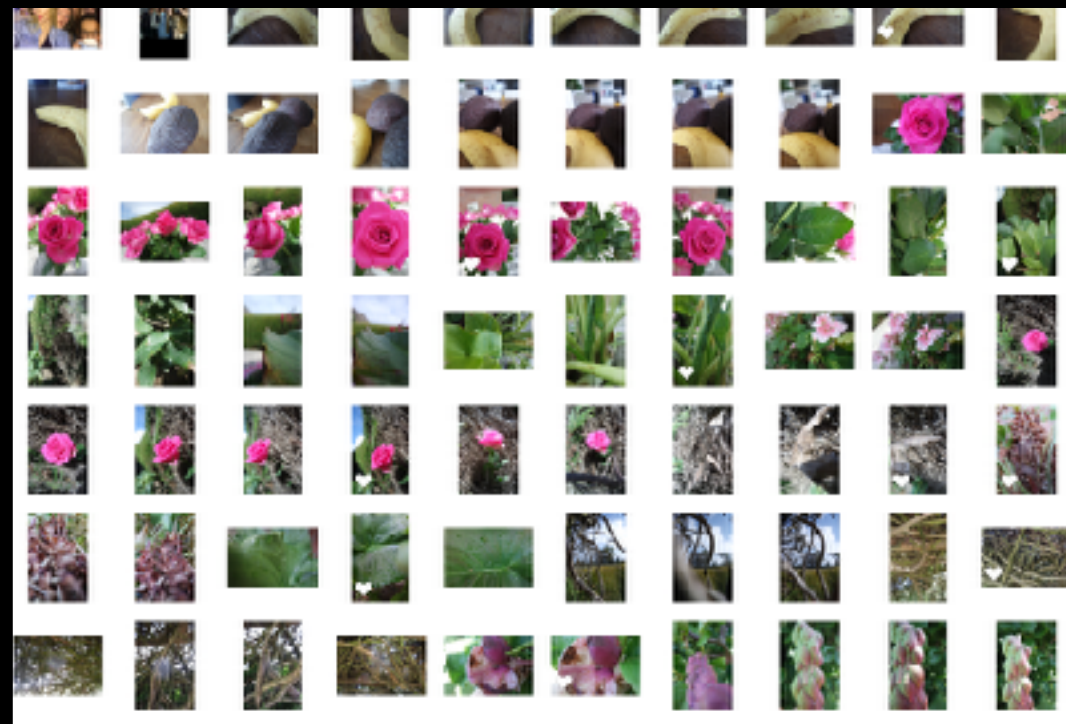




## THIRD SHOOT MAIN INSPIRATION

CLOSE UPS OF OBJECTS, PLANTS AND FRUIT  
TO SEE PATTERNS, TEXTURE AND FORM

My objective for this photoshoot was to develop some of his ideas of textures and patterns within the majority of his studies of plants and fruits. My aim is to find interesting natural compositions and marks that i can crop and edit to become a separate attractive pattern with an interesting composition.



For this shoot I also wanted to Devon the image with photoshop and diminishing the saturation and also and detail within



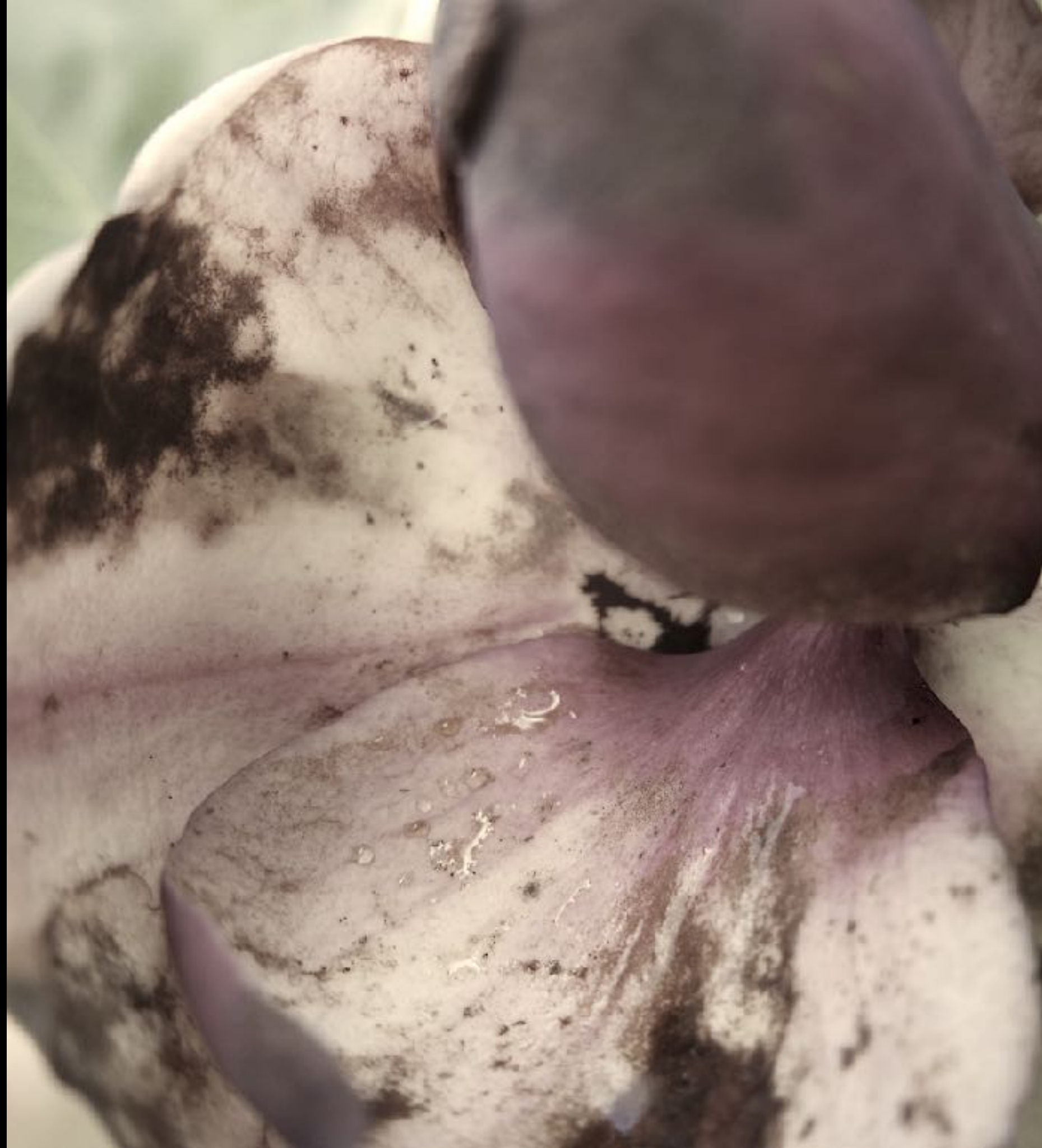
BEST PHOTO FROM THIS SHOOT



























## FAVOURITE 10 IMAGES, PHOTOSHOPPED, RELATIONSHIP BETWEEN



The circular shapes allow the line to bend and fold and create beautiful highlights within its motion. It creates a line of attention and focus to middle of the image. Creating a almost divided feel within the piece. The blur also develops the centre of focus and enhances the attention and detail hat the leaf actually has itself. I wanted to capture how in this image everything perfectly falls into place and creates a timeless quality to the image. It is effective due to the way that the circle in the inside is out of focus and once gain depthening image.





With this I wanted to capture how something beaten and bruised can still be beautiful, I only wanted this pattern and texture so cropped the rest on the fruit out. It displays a deep texture that is soft and easily bruised and injured. It shows a close up demonstration of patterns and marks within the banana. You are still able to see the curve within the fruit that shows a delicacy and shape within the piece and almost a circulation. This image also portrays the texture of reality within a normal everyday substance.



## BEST IMAGE FROM LAST SHOOT



This image portrays a sense of structure, strength and security. It allows a breakthrough of light while also capturing a contemporary composition and an intertwining of textures and multiple focuses of closer and deeper depths. I edited this image with a lower saturating and a higher warmer tones. I wanted to include the artist's illusions less conventional weaving of lines such as his more industrial photographs. I wanted to show an intertwining development of tonal range and the further black the darker the colours itself.





This image portrays an almost delicate brutality which refers to the themes of war that the artist continually references towards. The editing also allows more sharpness with the deeper tones emphasising the lines and realism within the leaf. The macro allowed a direct focus and centre of attention in the line and blurred atmospheric backdrop pushing the image forward allowing a bigger impact. I wanted to also develop the broken and devouring by nature. This image connotes a sense of self devourment and how its nature to die and has a solemn and sad tone to the piece again much like Renger-patzch.





Within this image I wanted to express the apparent and deep contrasting tones to the highlighted white areas. You can see the lines of texture and softens of the rounded leaf. I edited out the leaf due to not seeing the relevance of the texture and the blur and no focus of the green that would over power the lighter less harsh colouring.





This is one of my favourite images due to the contrasting of colours while being some what vibrant are also pushed back so developing a beautiful tonal range. I thought this image had a beautiful central composition with all the surrounding leaves. I took this image on macro while focus on the detail and textures within the leaves and flower. I edited this image to reduce the colour, it also debthens the tones and produces a Sophisticated feel overall it also proposes an interesting composition





I wanted an angle to this image to show the pure velocity and massiveness the building, it begins to create a presence and an effect of power much like the focus on the industrial war prone inspiration. The editing was to bring a deeper tone and enhance the details and create a more atmospheric sky that creates suspension and a persona to the building itself. I like the development of the darker tones lessening and lighting towards higher-up in the building, this allows more natural light to capture and enhance the Beauty itself. I wanted to capture the line within the wall and the structure of the building.





The water captures the light and draws attention to the piece and highlights a softer texture edited out the blur as it retracts the attention from the beauty within the water and lines and rhythmic flows on the leaf. I then wanted to focus on the water to exaggerate the delicacy of the water droplets and development of the highlights and reflections widening the shot and lengthening the piece itself.





This image was very busy quite unlike the artist and his purely materialistic photographs, so I decided to edit out the people creating shadows to show how little people are needed during the industrial period due to upcoming of the machines. The people becomes a sort of suspension and beauty within piece but your focus is still up towards the one of the buildings and there lighter tones and longitudinal sense of shape. I then wanted to capture how the flags zigzag and create a pattern and development of space throughout the piece.



BEST PHOTO OUT OF ALL THREE SHOOTS





## EVALUATION OF BEST PHOTO

I REALLY LIKE THIS PHOTO DUE TO ITS OVERLAPPING LINES AND CONTINUOUS MOVEMENT, IT HAS A VENERABILITY SENSUALITY IN THE COLLIDING LAYERS AND THE FORMS THE CREATE A STRUCTURE WITHIN THE LEAF. THE PHOTOSHOPIING OF THE LEAVES, CREATES A DARKER TONES BUT EXAGGERATES THE TONAL RANGE AND DIRECTS MORE ATTENTION TOWARDS THE OVERLAPPING SENSE OF BELONGING. IT IS VERY SIMILAR TO THAT OF THE PHOTOGRAPHERS WORKS. THE EDITING DEVELOPS THE TONES AND SHADES AND HAS A VERY CLASSIC CONTEMPORARY FEEL TOWARDS THE IMAGE. IN THE IMAGE YOU CAN ALSO SEE PATTERNS AND SMUDGES OF TEXTURE WHICH CREATE AN UNDERLINING HARMFUL SENSE AND ATMOSPHERE MUCH LIKE HIS WORK OF WAR AND HARM, EMPHASISED BY PUNCHES OR BRUISES THAT THE LEAF HAS, AND HOW IT IS PURE ALMOST. FURTHERMORE THE HIGHLIGHTS AND WHITER SEGMENTS HIGHLIGHT THE MAIN STRUCTURE AND WHERE THEY INTERTWINE AND BECOME ONE IN THE PIECES CREATING A COMPLEX COMPOSITION. ALTHOUGH THIS PIECES PORTRAYS A SENSE OF TRAUMA IT ALSO EMPHASISED A DELICACY AND LIGHTNESS TO TOUCH AND A SOFTNESS THAT IT COULD EASILY BE HARMED OR MOVED OUT OF SPACE AGAIN SHOWING A VENERABILITY WHICH I WANTED TO CAPTURE SUCH AS RENGER-PATZCH.