

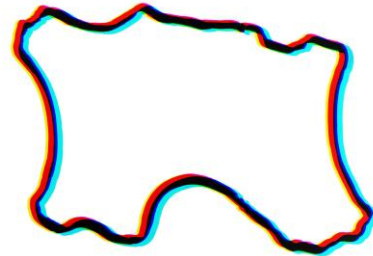
Media Release:

Archisle
THE JERSEY CONTEMPORARY PHOTOGRAPHY PROGRAMME



New exhibition of Jersey and International Contemporary Photography opens at Jersey Arts Centre:

Quintessence
Archisle is five



Quintessence is a group exhibition celebrating the first five years of Archisle: The Jersey Contemporary Photography Programme (www.archisle.org.je). The Archisle Programme, hosted by the Société Jersiaise Photo Archive promotes contemporary photography through an ongoing programme of exhibitions, education and commissions. Archisle connects photographic archives, contemporary practice and experiences of island cultures and geographies through the development of a forum for creative discourse between Jersey and international artists. *Quintessence* selects works commissioned for the new Archisle Contemporary Collection at the Société Jersiaise Photographic Archive since 2011 to celebrate, critique, contrast and discuss what has been achieved over the first five years of the project. The exhibition features works by:

Martin Parr / Tony Ray-Jones / Jem Southam / Michelle Sank / David Goldblatt / Yury Toroptsov / Elsie Wright and Frances Griffiths / Tom Pope / Peter Finnemore / Mark le Ruez / John Gibbons / Martin Toft / Finn Larsen

Since its launch in 2011, Archisle has engaged diverse approaches to contemporary lens based media to lead creative research into the condition of *islandness*, 'a complex expression of identity that attaches to places smaller than continents and surrounded entirely by water' (Stratford 2008). *Quintessence* contrasts works in the Archisle collection in a group exhibition for the first time to analyse the ways in which the Island's culture and landscape has been interpreted by Jersey and international photographers. The Archisle project recognises that Jersey as a small island community needs to go out and discover the world because the world will not come looking for us! Through internationalism we have developed a growing network of colleagues, friends, influences and inspirations. To reflect these connections, for *Quintessence*, artists represented in the Archisle collection were invited to nominate colleagues who have influenced or inspired their own visual language. *Quintessence* Curator Gareth Syvret remarked, 'We do not travel alone; we take with us the histories, knowledge, influences and ideas of others; others we have met and other places we have known.'

Alongside photographs produced in Jersey during the last five years, the exhibition includes Jem Southam one of Britain's leading landscape photographers and David Goldblatt, the seminal documentarist of apartheid era South Africa. Photographs by the brilliant observer of the British at work and leisure, Tony Ray-Jones (1941-1972) and the famous 'Cottingley Fairies' photographs by Elsie Wright and Frances Griffiths have been specially loaned by the National Media Museum, Bradford, UK. Curator Gareth Syvret continued: 'The Archisle project is about educating, creating, exhibiting and collecting original contemporary photographic art and plugging the Jersey community into the international scene. This exhibition reflects our journey over the first five years of the project and points to an exciting future. It's a fantastic opportunity for Jersey people to see and discuss this fascinating group of images first-hand.'

Press images



1. Michelle Sank. *Chloe and Leah, Havre des Pas, St Clement.* 2013. © Michelle Sank



2. David Goldblatt. *She said to him, 'You be the driver and I'll be the madam', then they picked up the fender and posed. Hillbrow, Johannesburg.* 1975. © David Goldblatt



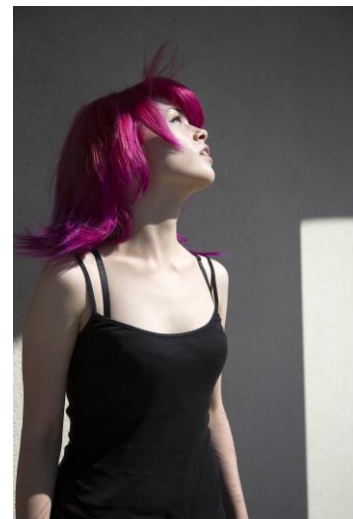
3. Martin Parr. *Liberation Day, Jersey.* 9th May 2013. © Martin Parr / Magnum Photos



4. Tony Ray-Jones. *May Day Celebrations.* c. 1967. © National Media Museum



5. Martin Toft. *Sandy Hook Bay, New Jersey, USA.* 30 July 2014. © Martin Toft



6. Yury Toroptsov. *Jess, St Helier, Jersey.* 2014. © Yury Toroptsov

Notes to Editors:

- The Quintessence exhibition is at The Berni Gallery, Jersey Arts Centre from 30th November 2015 to 2nd January 2016.
- An Exhibition Launch will take place at Jersey Arts Centre on Thursday 3 December from 5.30pm.
- A Gallery Talk with Gareth Syvret, Curator will take place on Saturday 12 December from 2-3pm.
- *Archisle*: The Jersey Contemporary Photography Programme, hosted by the Société Jersiaise, promotes contemporary photography through an ongoing programme of exhibitions, education and commissions.
- The *Archisle* project connects photographic archives, contemporary practice and experiences of island cultures and geographies through the development of a space for creative discourse between Jersey and international practitioners.
- *Archisle* project website at: www.archisle.org.je

For further information contact Gareth Syvret on Tel. 633398 or email archisle@societe-jersiaise.org .

Kindly sponsored by:



Ends