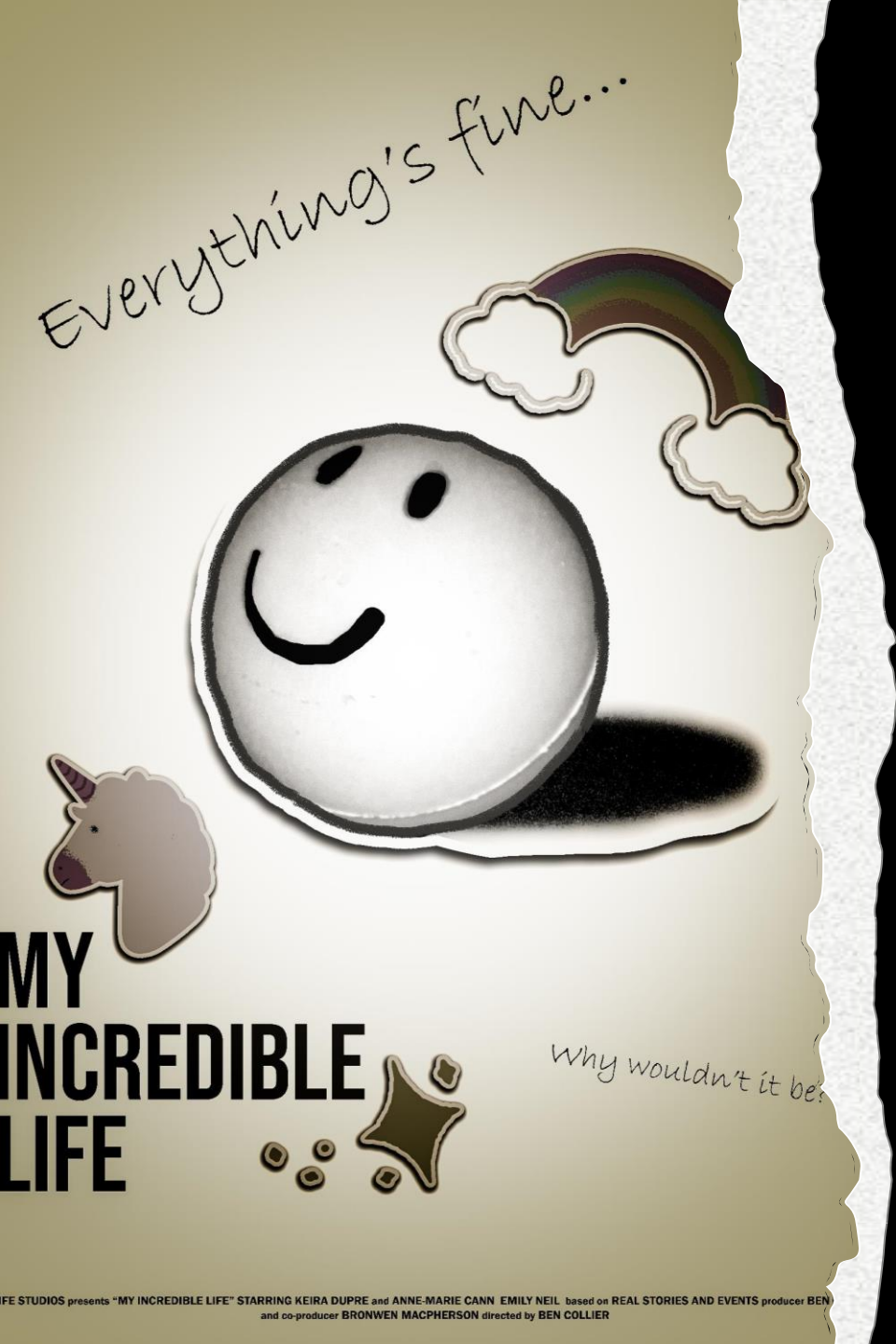


My Incredible Life

PITCH

“A story that follows a nameless faceless character, and their struggles as the world appears to turn on her. They come to find solitude in themselves.”



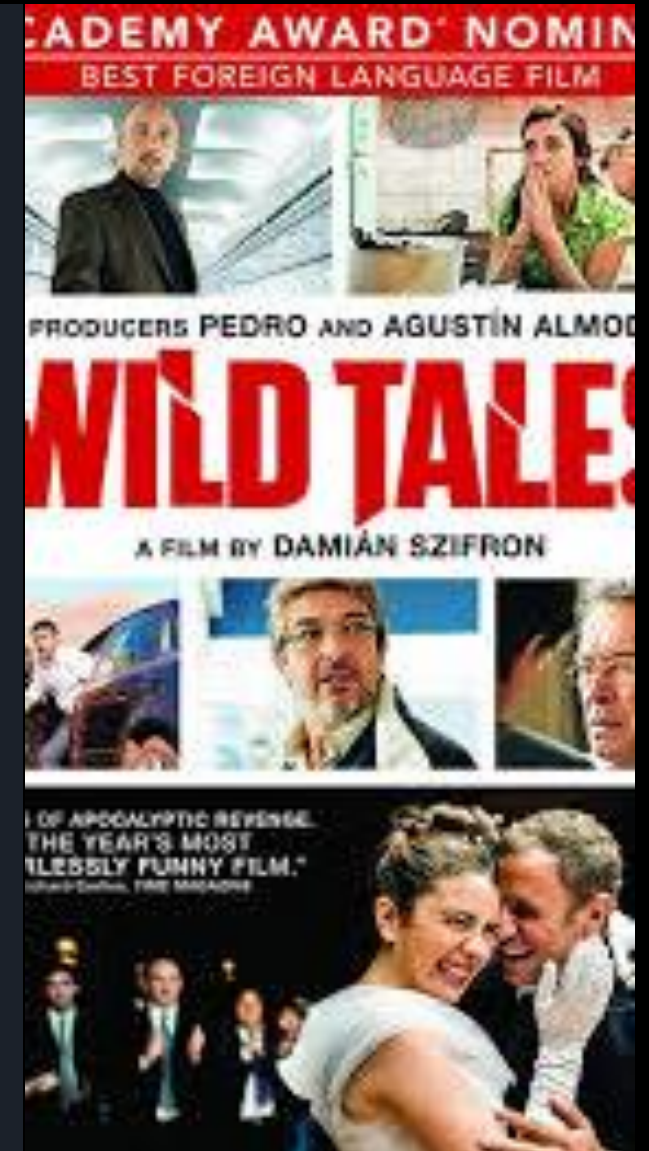
Plotline

- The film begins with the protagonist having conversations with people, explaining how they're fine, and there's nothing to worry about. Immediately afterwards, they're shown not looking fine.
- They explain a sequence of events in their life where it felt like the world has been against them, and how they were led to this point.
- However, they then realise how they don't need other people in their life, they have themselves, they're able to rely on themselves to be there, unlike others.



Influences

- I have taken structural influences from La Jetée, creating a non-linear narrative through the protagonist's perspective. It ends where it begins, while explaining their story in between, showing how they ended up in this position. I will also be taking influence from La Jetée's narrator, which will help isolate the protagonist and their story within the film
- I have taken thematic influences from Wild tales, specifically Till Death do us Part. The protagonist feels cheated, and their life is ruined, they take revenge, however, then find solitude in their new upturned reality, similar to the story of the wife.





Actors

- Keira Dupre will star as the main protagonist of this short film.
- Anne-Maire Cann and Emily Niel will co-star as the bullies of this short film

I have chosen these actors as they all have a history in performing arts and will be able to convey the strong emotions required in this film.

- A teacher will also play a very short role playing themselves, one is yet to be found.
- I, as well as other friends and family will produce voiceovers, however, will not physically appear within the short film

Equipment and location

- Locations include:
 - 2 classrooms
 - Studio
 - FB fields
 - House, bedroom and hallway
- Equipment needed
 - Canon 750d
 - 18-55mm lens
 - Gimble (used in school only)
 - Rode mic
 - Additional stand-alone mic

