

Shane Meadows (1972-)

- Shane Meadows, born on December 26, 1972, in Uttoxeter Staffordshire, is an English filmmaker, best known for *This is England*, and *Dead Man's Shoes*.
- Meadows was bullied at school, because his father was a suspect for a murder.
- The majority of Meadows' films have been set in the Midlands.
- His first film was made in 1996



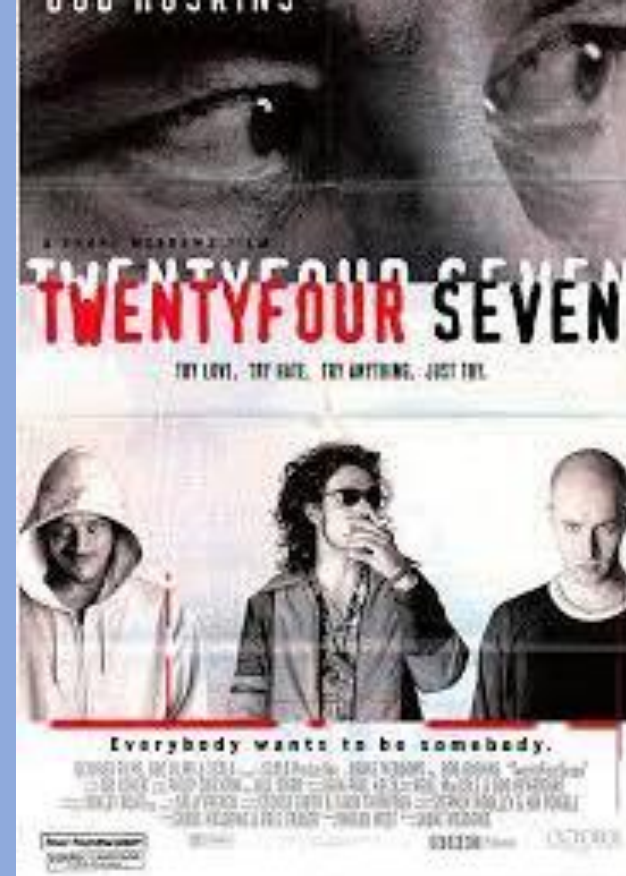
Select filmography

- [*Small Time*](#) (1996)
- [*Twenty Four Seven*](#) (1997)
- [*A Room for Romeo Brass*](#) (1999)
- [*Once Upon a Time in the Midlands*](#) (2002)
- [*Dead Man's Shoes*](#) (2004)
- [*This Is England*](#) (2006)
- [*Somers Town*](#) (2008)
- [*Le Donk & Scor-zay-zee*](#) (2009)
- [*The Stone Roses: Made of Stone*](#) (2013)



Genre

Shane Meadows did not base his films off genre's, much of the content from his films are semi-autobiographical, he was inspired by Martin Scorsese's Mean streets, he said that after watching it, it was the first time he thought 'Maybe you don't have to make a film about a genre, maybe you can make a film about your own life.'





Messages and values

-
- Anti-racism
 - Anti-bullying
 - Why Margret thatcher was wrong



Narrative themes

- Belonging
- Racism
- Anti-nationalist
- Kitchen sink realism



Editing

- There are several times where editing techniques are applied in this is england, one example being combo's montage



Cinematography

- Close up shots - These are often used to immerse the viewer and feel what the character is feeling.
- High angle shot- makes the subject of the shot seem powerless often seen when the characters are at their lowest.



Mise en scen

- The mise en scen of this is england reflects the setting, a cheap town in the midlands, we can see this in the characters costumes as well.



sound

- The needle drops in the movie are all 80s pop songs that add tension to certain scenes and make the mood of the scene. An original soundtrack made by Ludovico Einaudi is also used greatly in the film for example the combo montage scene and how it plays classical but sad music to show the tone of the scene

