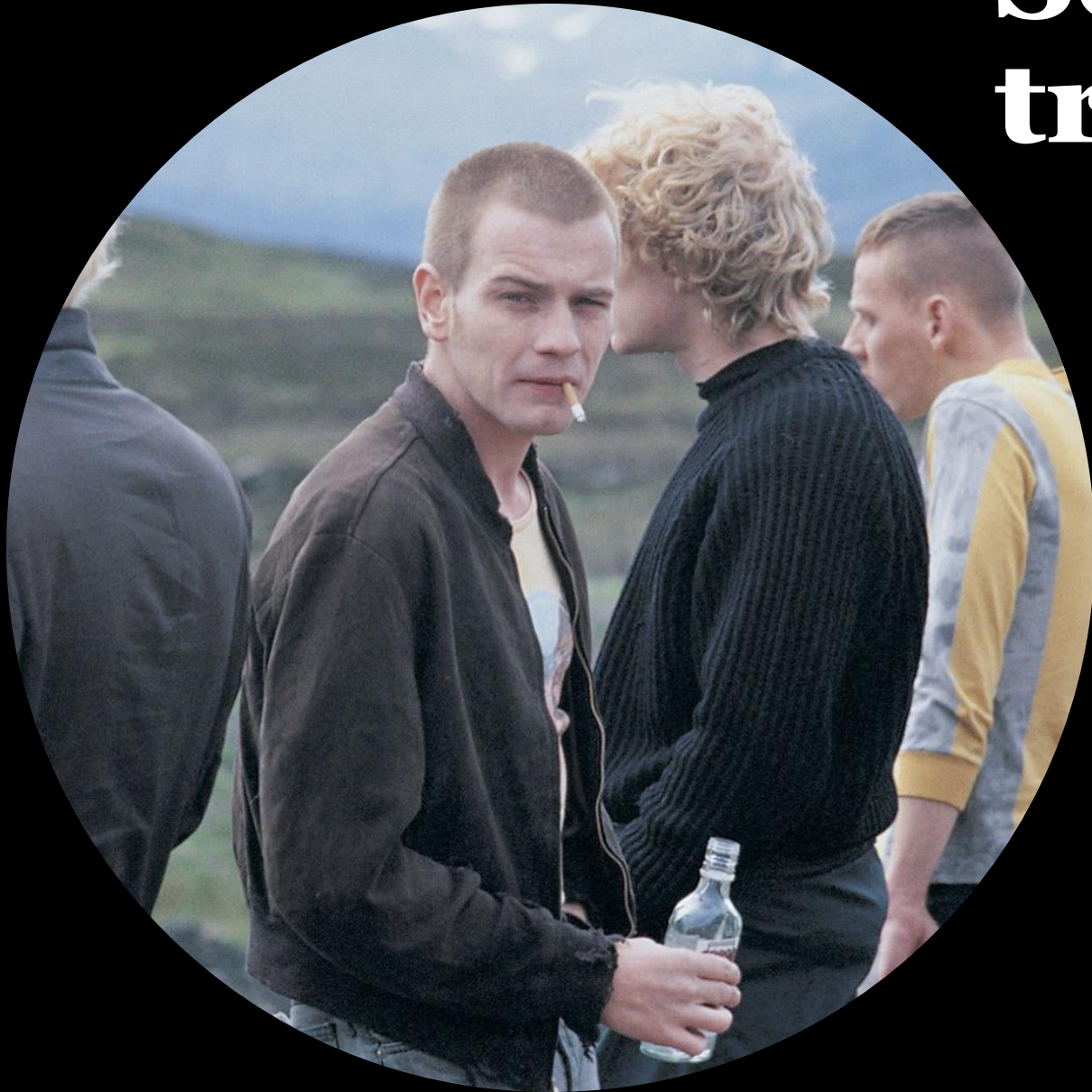


This is England and  
Trainspotting aesthetic

# Social realism in trainspotting



- Social realism is shown in trainspotting through Drug addiction and it's impact, as the film shows the harsh reality of addiction and doesn't romanticize it in any way
- Another way social realism is shown is through institutional failures, including the healthcare system and social services

# Social realism in this is England

---

## Racism and Nationalism:

- The film explores social realism through racism and nationalism, showing. The story addresses the rise of far-right ideologies and the impact they have on communities

## Friendship and belonging:

- The theme of social realism is displayed in the relationships formed by Shaun and the group of skinheads and explores the sense of belonging.



# Verisimilitude in trainspotting

## Realistic setting:

- The film is set in real locations in Edinburgh allowing for the environment to be more authentic, showing where the characters live

## Natural acting

- The inclusion of non-professional actors in supporting roles, brought authenticity to the film, and made it feel more genuine than if taught actors were to play roles







# Verisimilitude in This Is England

---

Realistic portrayal of characters:

- The characters in This Is England were realistic, and showed what it was like to be one of those characters, an example is working class people as Shane Meadows does a good job of showing what it is like to be working class

Attention to trends of the period:

- The film pays a lot of attention to period specific details including fashion, music and cultural references, which helps to immerse the viewers into the world

# Pathos in trainspotting

Danny Boyle uses pathos in trainspotting to evoke emotions from the viewers, examples of pathos in the film are:

Baby Dawn's death, as we see Allison crying and screaming, as she has discovered baby dawn dead, from neglect as all the characters were high, this evokes strong emotion in the viewer, but the scene continues, and instead of Renton saying something sympathetic, he takes a hit of heroin

Final train scene:

where Mark steals the drug money and leaves behind his friends, is a bittersweet moment. The audience may empathize with Mark's decision to escape the destructive environment, but there's a sense of melancholy as he abandons his friends.



# Pathos in This Is England

---

Shane Meadows uses pathos in *Trainspotting* to evoke emotions from the viewers, examples of pathos in the film are:

Milky's beating:

This scene shocks the viewer, as just moments before it occurs the scene was happy, and upbeat, but quickly turns intense and heartbreaking

Combo's confession:

This scene makes the viewer feel sympathetic for Combo, as he is showing vulnerability

The final scene: This scene causes emotion in the viewer as it shows Shaun rejecting nationalism, and the far-right ideologies.



# Comedy in This is England

---



THE USE OF COMEDY IN THIS IS ENGLAND IS LINKED WITHIN ITS KITCHEN SINK REALISM



SHANE MEADOWS'S COMEDY IN THE MOVIE IS REALISTIC AND THE AUDIENCE CAN RELATE AS THEY MIGHT USE THE SAME TYPES OF JOKES OR EXPERIENCE THE SAME THINGS WITH THEIR FRIENDS



THIS EFFECTS THE VIEWER AND MAKES THEM RELATE WITH THE CHARACTERS THROUGH THE USE OF COMEDY.





# Comedy in trainspotting

---

- -The comedy in Trainspotting is very unique to the viewer as the events of the film is not something many people can relate with.
- -An example of this is Renton diving into the worst toilet in Scotland.
- -There is some realism in the comedy as we see how Renton and his friends interact with each other and some viewer can relate.
- The comedy of Trainspotting is similar to This is England in this way.



# Color Grading In This is England

- The color grading of this is England reflects the mood of the movie and creates an impact on its viewer
- It mostly shows duller colours to show the darker themes of the movie
- This is seen in the parallel shots of Woody and Combo's group. The first shot is when the movie is more positive when Shaun is with Woody and the darker and duller colors are with Combo.





## Color grading in Trainspotting

- Like this is England, Trainspotting use of colour grading also reflects the mood of the scene
- For example, bright colours are used in scenes where Renton is taking heroin
- As seen in the spud scene, the color grading changes slightly and creates more dull colors.



# Auteur trademarks this is England

---

- One of the trademarks in this is England is drowning out the audio of characters with music
- This is usually done with the movie's original soundtrack
- Another trademark is long takes of close-up shots on characters
- An example of this is when we see Combo breaking down in his car.





# •Auteur trademarks trainspotting



-An example of Trainspotting's auteur trademarks is its jump cuts and quick editing style

-This makes the film unique and fast paced which also reflect the effects heroin has on its characters.

-A good example of this is in the scene with Spud in the interview and jump cuts are used to convey his spiritic nature.

