
SHANE MEADOWS AUTEUR TASK

By Josh Wright

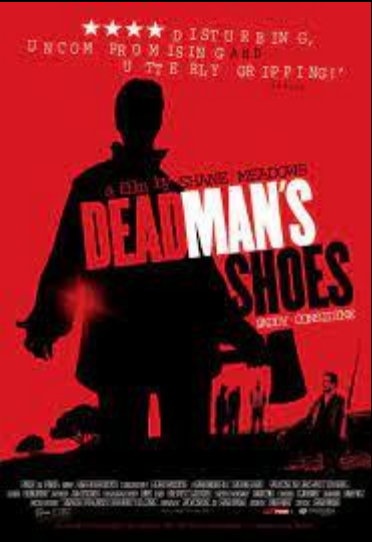




BIOGRAPHY

- Shane Meadows was born in 1972 in Uttoxeter and lived in Nottingham.
- He is an English director, screenwriter and actor who has worked on many iconic films
- In his early life a significant moment happened where his father was wrongfully accused of the murder of a child..
- Because of this he was bullied as a child and went through a traumatic event where he was sexually assaulted by some older boys
- He later joined a performance art course at Burton college. There he met Paddy Considine who later became a future collaborator in his films.

SHANE MEADOWS FILMS



GENRE

The genre of Shane's films focus on the realism of them also known as kitchen sink realism.

A lot of his films are based off autobiographical story's for example the theme of being bullied about his dad is a big part of this is **England**

THEMES

- Racism- This is a prevalent theme in his movies as we see the anger towards minorities for example when Combo raids the shop keeper and steals some boys football whilst saying racial slurs. We also see how it changes Shua
- Bullying- Shuan gets bullied a lot throughout the movie, for example the older boy at the start of the movie and also Gadget who feels that he is being replaced from the group.
- War- The loss of Shaun's father in the war changed his outlook on life is a motive as to why he looks up to people so easily like Woody, Milky and Combo.



NARRATIVE THEMES

Shane Meadows films are set in the midlands of the England.

England/Midlands- Shane Meadows represents the mid lands through his story's as they are part of his life which add to the themes of the movie.

Kitchen Sink Realism- The characters in movies that have kitchen sink realism are often portrayed as often angry and violent.



EDITING



- An example of the editing in this is England is the montage scene with Combo. This establishes Combo's motives quickly without telling the audience

CINEMATOGRAPHY

Close up shots- These are often used to immerse the viewer and feel what the character is feeling.

High angle shot- makes the subject of the shot seem powerless often seen when the characters are at their lowest.



MISE EN SCENE

- The mise en scene in the movie is reflective of the cheap looking towns in the midland. All the props and costumes are all things in Shane Meadows upbringing so we can see that in his movies.





Soundtrack

The needle drops in the movie are all 80s pop songs that add tension to certain scenes and make the mood of the scene.

An original soundtrack made by Ludovico Einaudi is also used greatly in the film for example the combo montage scene and how it plays classical but sad music to show the tone of the scene.