

Shane Meadows

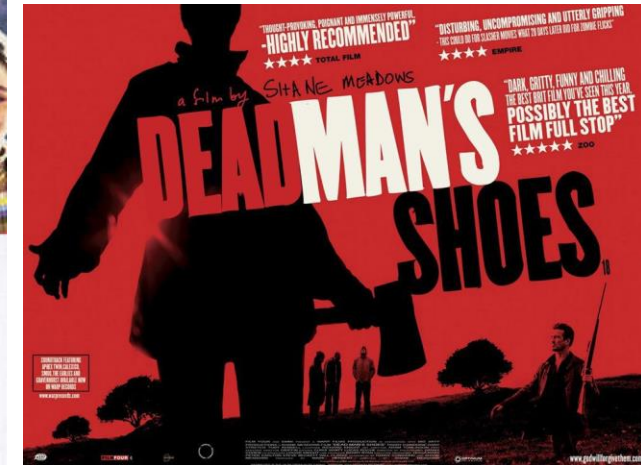
Auteur Task



- Shane Meadows is a director, screenwriter and actor. He is most well known for directing *This is England*, which is considered to be a 'cult film', and its three sequels, which took the form of tv series as opposed to feature films.
- He was born in Staffordshire on 26 December 1972, where his father had found the body of a murdered child named Susan Maxwell and was a suspect in the case at first. This led to Meadows being bullied at school.
- Meadows moved to the Midlands, more specifically Nottingham, at the age of 20.
- Meadows studied Performing Arts at Burton College, where he met actor Paddy Considine, who has frequently appeared in Meadows' films ever since.
- He made his directional debut in 1996 with 'Small Time', which has a runtime of just 60 minutes.

Feature-Length Filmography

- Small Time (1996)
- Twenty-Four Seven (1997)
- A Room For Romeo Brass (1999)
- Once Upon a Time in the Midlands (2002)
- Dead Man's Shoes (2004)
- This is England (2006)
- Somers Town (2008)
- Le Donk and Scor-zay-zee (2009)
- The Stone Roses: Made of Stone (2013)
- (Since This is England, Meadows has also directed many TV shows, such as the three sequels to his 2006 film and a miniseries titled 'The Virtues')



Genres

- Drama
- Crime
- Semi-Autobiographical

(Meadows took inspiration from Martin Scorsese's 'Mean Streets', and realized he could make films based on his personal life as opposed to assigning them to specific genres)



Messages and values

- Anti-bullying towards vulnerable people (e.g. young or disabled)
- Anti-racism
- Anti-nationalism
- Margaret Thatcher's ideologies and why they are wrong



Narrative Themes

- Life in working-class areas, mainly the Midlands
- Crime
- Violence
- How younger people (specifically teenage boys) see the world
- Both sympathetic and unsympathetic characters
- Realism





Cinematography

- Handheld camera movements to make the film appear authentic and real
- Big close ups suggesting characters growing closer
- High angle shots used to connote one characters power over another
- POV shots used to show Milky's perspective and create a greater emotional impact for the audience

Editing

- In 'This Is England' specifically, Meadows commonly uses montages to convey ideas to the audience
- The opening of the film consists of a montage showing many different people and things that are recognizably English and from the 80s, such as Princess Diana, Margaret Thatcher and Rubik's cubes.
- Montages are used later in the film to show three stages of Shaun's life. One where long shots are used to show he's alone and isolated, one where he finds happiness being among Woody's gang and one where Combo 'trains' him to engage in racist activities.



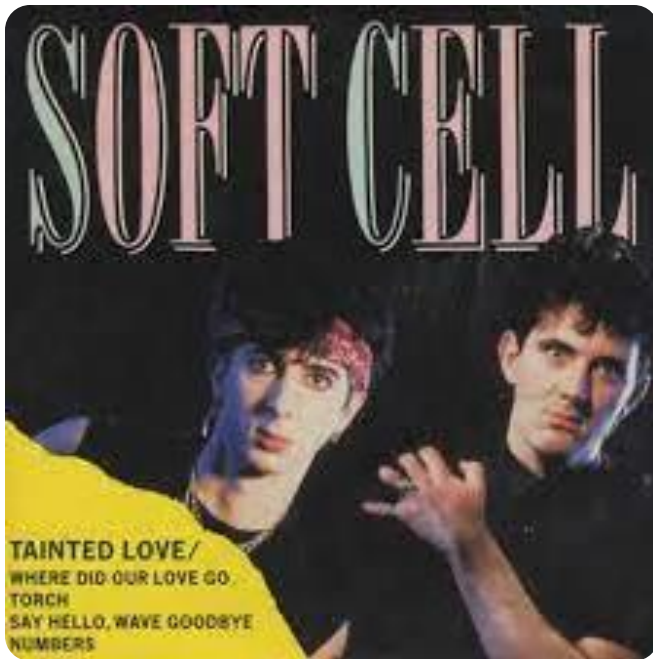
24:43





Editing

- Meadows uses a montage in the opening of 'Dead Man's Shoes' too, where he cross-cuts between scenes depicting the characters of Richard and Anthony walking together as adults and scenes of their childhood together.
- Meadows also uses flashbacks, presented without colour, in the film to reveal how a group of men abused Anthony and what it ultimately led to. The flashback sequences are essential to the eventual plot twist of the film.



Soundtrack

- Meadows often uses music to establish the time and area a film is set in.
- In This is England, a film set in 1983 but released in 2006, Meadows uses popular songs from the 80s such as 'Tainted Love' and 'Come on Eileen'.
- In Dead Man's Shoes (2004), the soundtrack consists of songs from the early 2000s, as these songs would have been popular at the time the film was released.
- The songs he uses are usually sung by British artists, reinforcing the location his films are set in.

Mise-En-Scene



- Gritty, realistic look to his films
- Location almost always The Midlands, This is England was filmed in Nottingham but does not take place there.
- Frequent collaborators – Andrew Shim, Vicky McClure, Thomas Turgoose, Stephen Graham.

