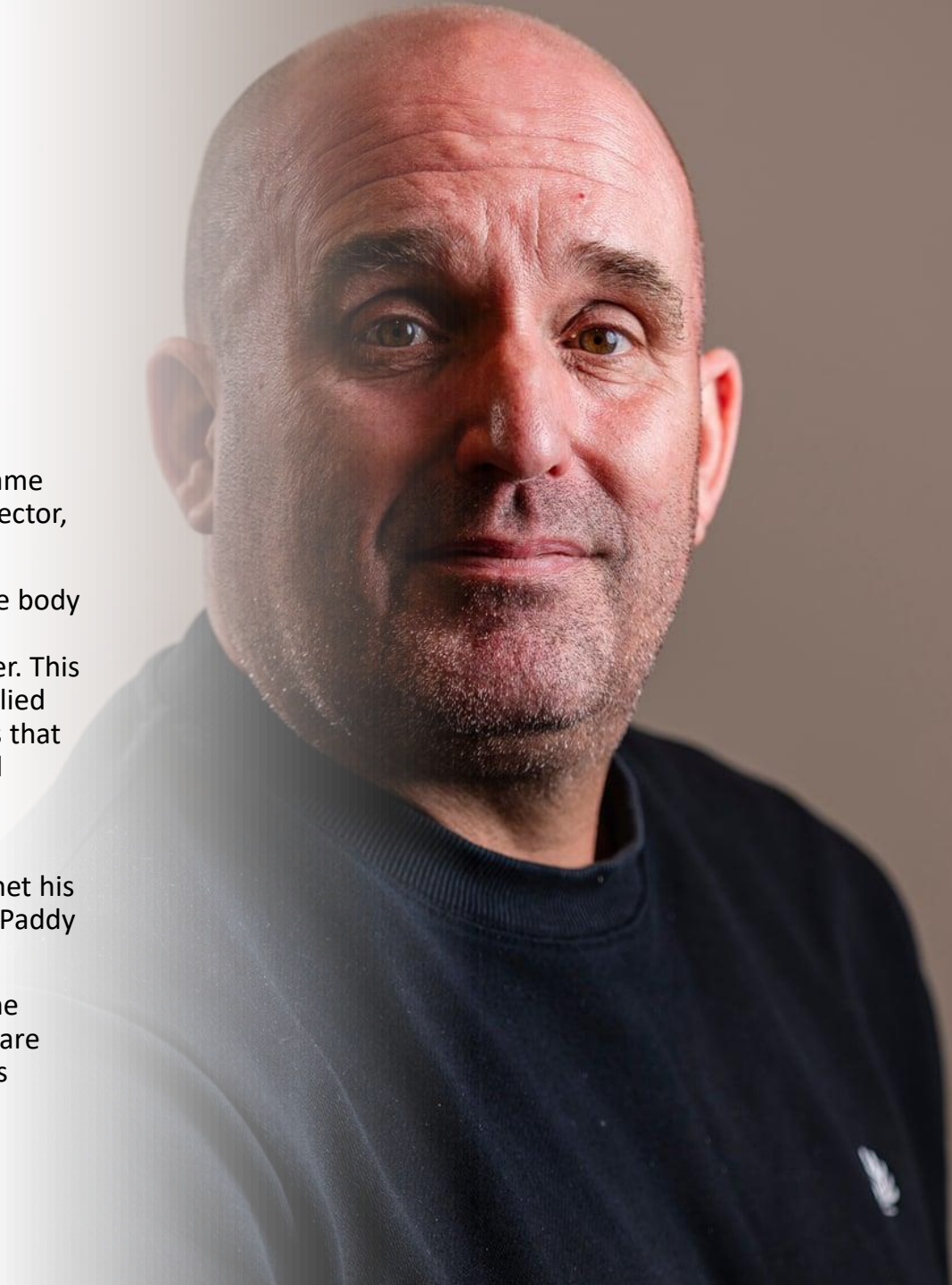


Biography of Shane Meadows:

- Born December 26th, 1972. Shame Meadows is an English Film director, lived in Nottingham.
- When his Father discovered the body a child murder victim, he was labelled a suspect In the murder. This resulted In Meadows being bullied for it. It can be seen in his films that a main subject revolves around bullying.
- He attended a performing arts course at Burton College and met his friend and future collaborator, Paddy Considine.
- His films are mainly based in the Midlands, and his soundtracks are influenced by Martin Scorsese's 'Mean Streets'.



Shane Meadows – Filmography

- [*Small Time*](#) (1996)
- [*Twenty Four Seven*](#) (1997)
- [*A Room for Romeo Brass*](#) (1999)
- [*Once Upon a Time in the Midlands*](#) (2002)
- [*Dead Man's Shoes*](#) (2004)
- [*This Is England*](#) (2006)
- [*Somers Town*](#) (2008)
- [*Le Donk & Scor-zay-zee*](#) (2009)
- [*The Stone Roses: Made of Stone*](#) (2013)

SUMMER 1983. A TIME TO STAND OUT FROM THE CROWD

THIS IS ENGLAND

A Film by Shane Meadows



"... AND UNFORGETTABLE. A WORK OF ART!"

ELIZABETH WEITZMAN NEW YORK DAILY NEWS



Shane Meadows - Genre

Meadows films follow a 'kitchen sink realism' based on a partially autobiographical storyline. This can be shown with the theme of bullying, where in some of his films, such as in 'This is England' expresses how he was bullied about his dad.





Shane Meadows – Messages and Values

In his film, 'This is England' the messages and values are the following:

- **Anti-bullying** – The film revolves around bully figures and how they affect Shaun's life, such as the teasing from the older boy Harvey, physical and mental abuse from Combo and some occasional abuse from Gadget due to fear of being replaced.

- **Anti-Racism** – Showing how the abuse towards minorities such as the Pakistani store owner and the boys playing football, influences Shaun's personality, we can see how it changes his suffering into anger, which he takes out on them.

- **Anti-War** – Through showing montages of war footage at the start and end of the film, and the narrative point of Shaun's dad having been killed in one, the film shows the true effect war has on a family when someone dies. This removal of a key figure in Shaun's life can be explained as a partial reason why he looks towards figures like Woody and Combo as role-models on how to behave as his life lacks that father figure to guide him maturely.



Shane Meadows – Narrative Themes

Shane Meadows Narrative films are usually British time-period films set in mainly the Midlands.

Some main Narrative themes his films follow are:

- **Kitchen sink realism** – British cultural movement in film that portrayed male protagonists as ‘young angry men’ – This is evidently seen in ‘This is England’.
- **Violence** – In some of his other films, such as ‘Dead man’s shoes’ and ‘Twenty-four seven’ violence is a main theme in the narrative.
- **The Midlands and the North** – Being born in the Midlands, it’s clear Shane Meadows expresses parts of his life there in his films. Many of his films are based there and often their themes resolve around that.



Shane Meadows – Cinematography

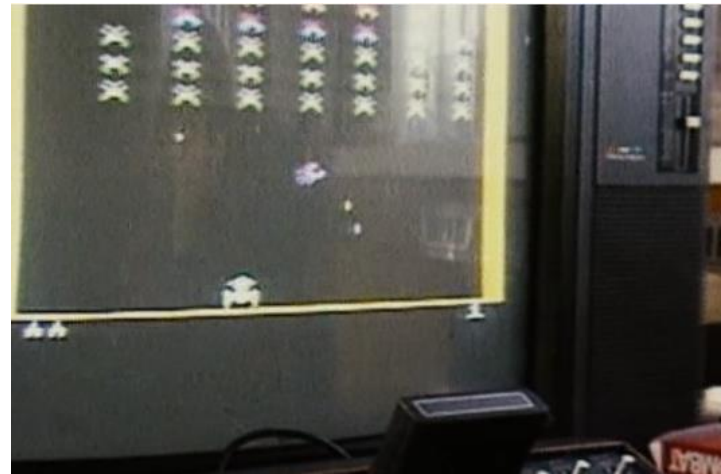
Shane Meadows use of Cinematography can be seen in such examples of 'This is England':

- **High angle shot** – Connotes intimidating presence.
- **Close up shot** – Shows emotional state through facial expressions.
- **Wide angle lens** – Helps establish the environment the characters are in.



Shane Meadows – Editing ‘This is England’

With the use of montages of key events from the 80s, This helps establish the time-period and the setting via editing. With footage of the Falklands war, it furtherly adds to the plot lines, as footage of casualties helps furtherly generate the background to how possibly Shaun’s dad had died.





THIS IS ENGLAND

ORIGINAL MOTION PICTURE SOUNDTRACK

- 01 Toots & The Maytals: 54-46 Was My Number
- 02 Dexys Midnight Runners: Come On Eileen
- 03 Soft Cell: Tainted Love
- 04 Dialogue: "Underpass/Flares"
- 05 Gravenhurst: Nicole (Instrumental)
- 06 Dialogue: "Cynth/Dad"
- 07 Al Barry & The Cimarrons: Morning Sun
- 08 Dialogue: "Shoe Shop"
- 09 Toots & The Maytals: Louie Louie
- 10 Toots & The Maytals: Pressure Drop
- 11 Dialogue: "Hair In Café"
- 12 The Specials: Do The Dog
- 13 Ludovico Einaudi: Ritornare
- 14 Dialogue: "This Is England"
- 15 The Upsetters: Return Of Django
- 16 UK Subs: Warhead
- 17 Ludovico Einaudi: Fuori Dal Mondo
- 18 Strawberry Switchblade: Since Yesterday
- 19 Dialogue: "Tits"
- 20 Percy Sledge: The Dark End Of The Street
- 21 Ludovico Einaudi: Oltremare (edit)
- 22 Clayhill: Please Please Please Let Me Get What I Want
- 23 Ludovico Einaudi: Dietro Casa
- 24 Gavin Clark: Never Seen The Sea
(PREVIOUSLY UNRELEASED BONUS TRACK FROM THE FILM TRAILER)

Shane Meadows – Soundtrack

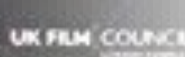
With iconic 80's music, needle-dropped at various points of the film, it creates a memorable soundtrack associated with the film.

Mostly featured, the band, Toots and the Maytals represent the film, this choice of song is interesting in terms of its origins in comparison to what takes place in the film.

Being a reggae band, this is a stark contrast to the nationalistic behaviours of the characters in the film who display nothing but English patriotism, and xenophobia to anything from outside there.



THIS COMPILATION © 2007 UNIVERSAL MUSIC OPERATIONS LTD. © 2007 UNIVERSAL
ALL RIGHTS RESERVED. UNAUTHORISED COPYING, REPRODUCTION, HIRING, LENDING
AND BROADCASTING PROHIBITED. A PRODUCT OF UNIVERSAL MUSIC OPERATIONS LTD
MARKETED AND DISTRIBUTED IN THE UK BY UNIVERSAL MUSIC GROUP COMPANY, LONDON
9848363 / LCS064 / BEM/SABAM



Shane Meadows – Mise en Scene

- In mainly all scenes of 'This is England' there is a constant brightness to scenes with the lighting.
- All his films follow a gritty realism.
- Shane Meadows features the actor, Stephen Graham in a numerous amount of his other films.
- Locations in Meadows films all fit around Mid-lands.

