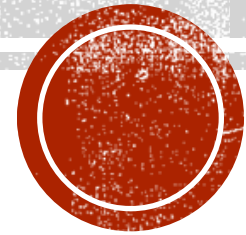


FILMS IN THE 1910'S



KEY FILMS AND DIRECTORS

Films:

- A Christmas Carol – Directed by J. Searle Dawley in 1910
- The Wonderful Wizard of Oz – Directed by Otis Turner in 1910
- The Birth of a Nation – Directed by D.W Griffith in 1915
- Easy Street – Directed by Charlie Chaplin in 1917



A CHRISTMAS CAROL

Film:

- Short Silent Film
- First film adaptation of the story

J. Searle Dawley:

- "First Motion Picture Director"
- Established Balboa Studio in California
- Directed Frankenstein, A Christmas Carol, Charge of the Light Brigade and Snow White
- Inspired Walt Disney



THE WONDERFUL WIZARD OF OZ

- Silent Fantasy Film
- Earliest adaptation of the 1900 novel
- Inspired many sequels
- Inspired 1939 film



BIRTH OF A NATION

Film:

- American silent epic drama
- Based on 'The Clansman' and 'The Leopard's Spots'
- First 12-reel film in the US
- Extremely controversial
- One of the events that inspired the reformation of the KKK



EASY STREET

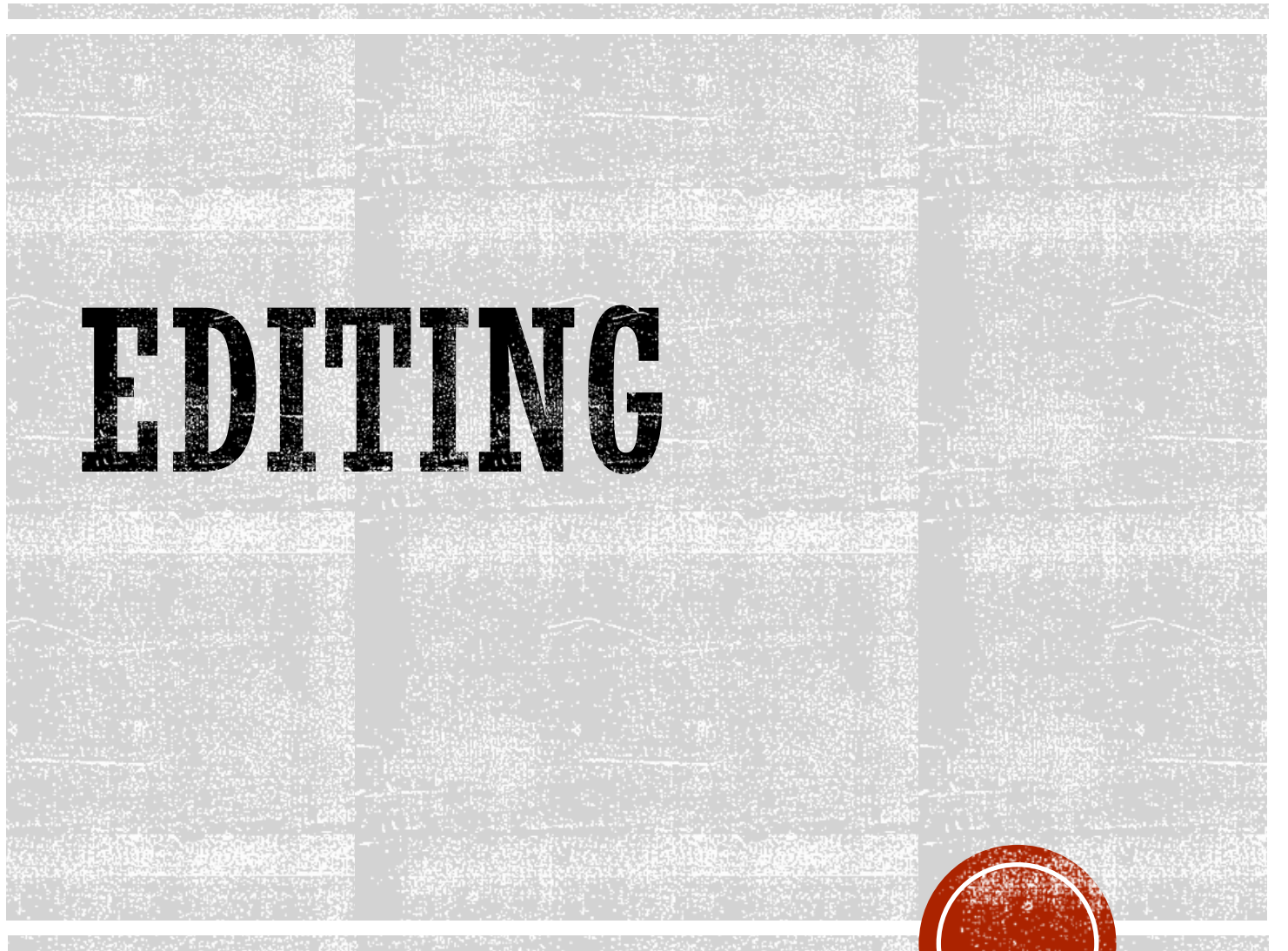
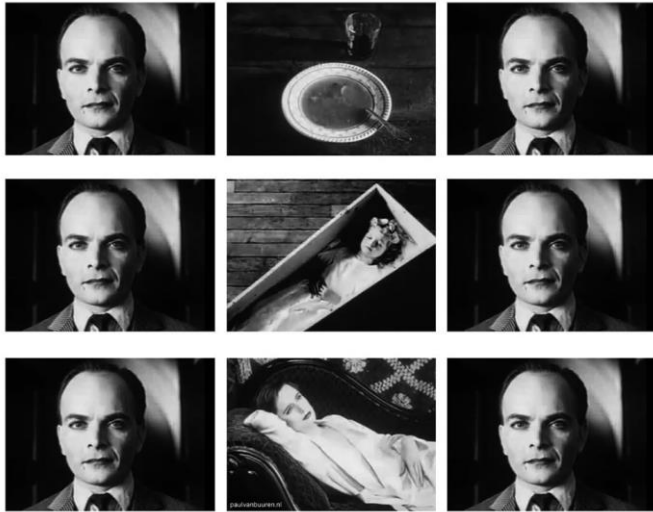
Film:

- A short action comedy film by Charlie Chaplin
- A sound verion was released in 1932 with music and sound effects

Charlie Chaplin:

- English comic actor
- Became a worldwide icon and
- Wrote, produced, directed and starred in his films
- Films contain slapstick humor and social and political themes
- Won an Honorary Academy Award in 1972
- Still held in high regard







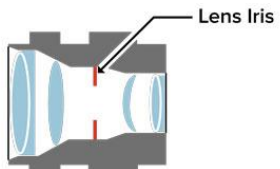
CAMERAS



Iris Open



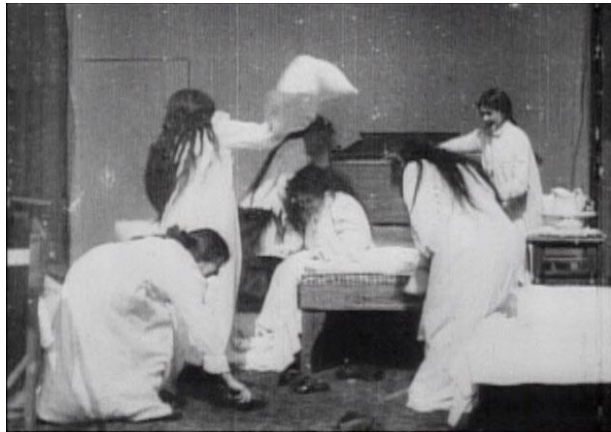
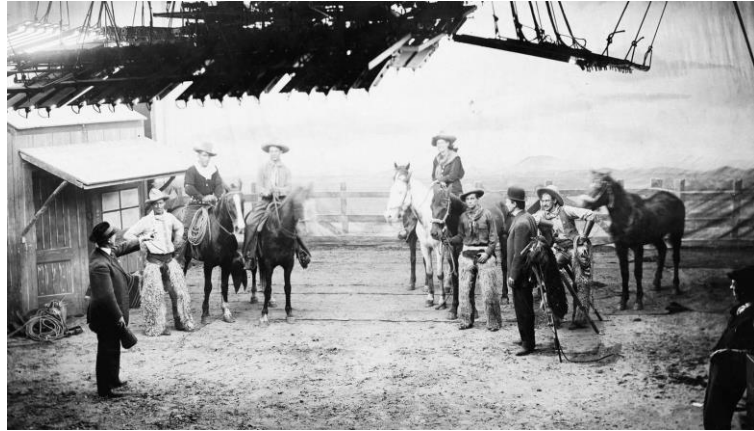
Iris Closed



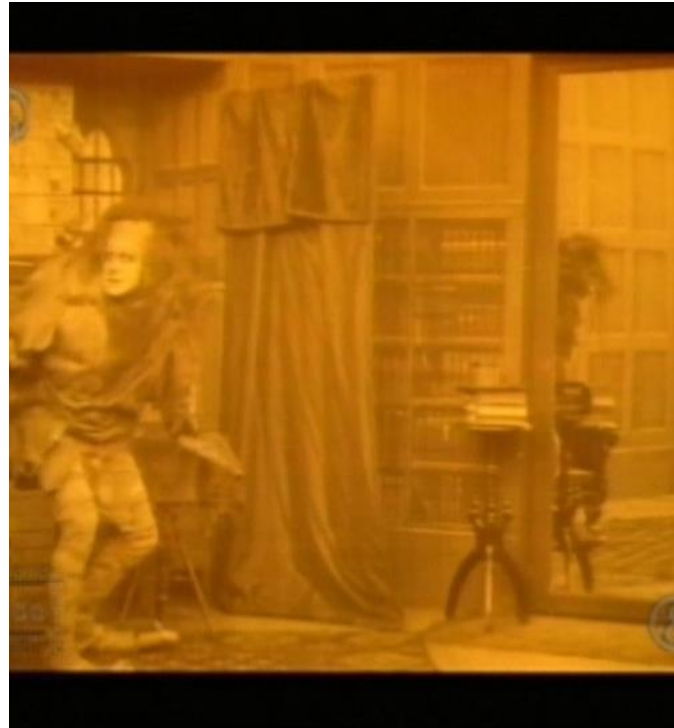
1910

LIGHTING

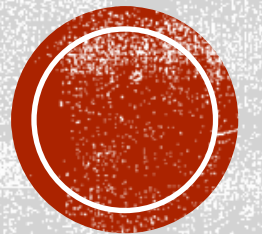
1919



His nephew calls to wish him
a Merry Christmas.

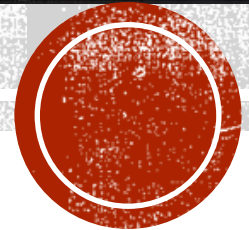


SOUND

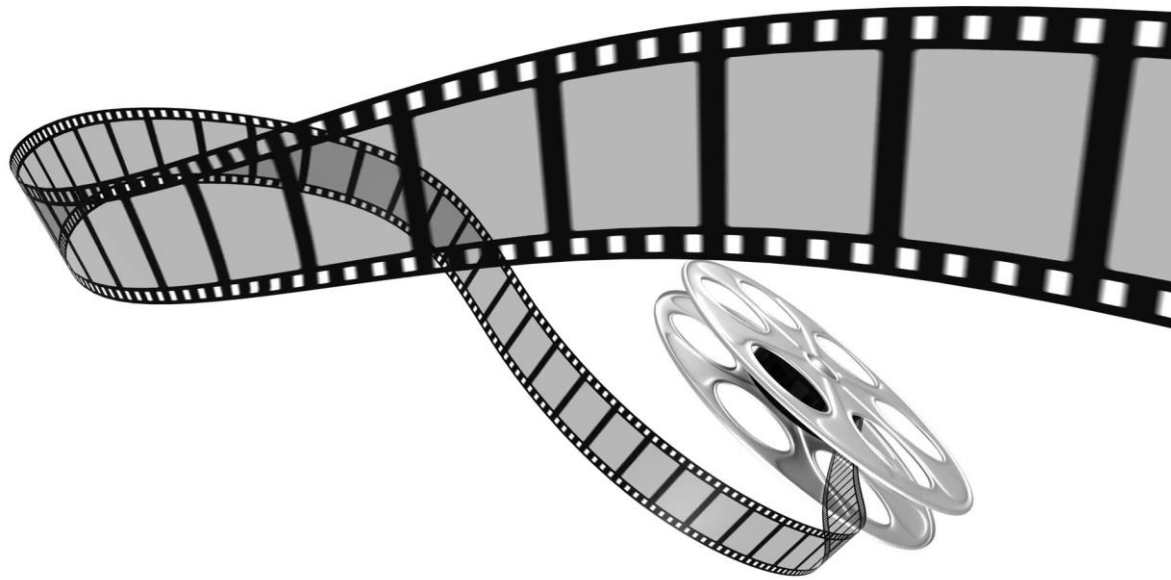




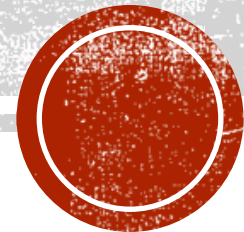
THE STUDIO SYSTEM



THE BASICS

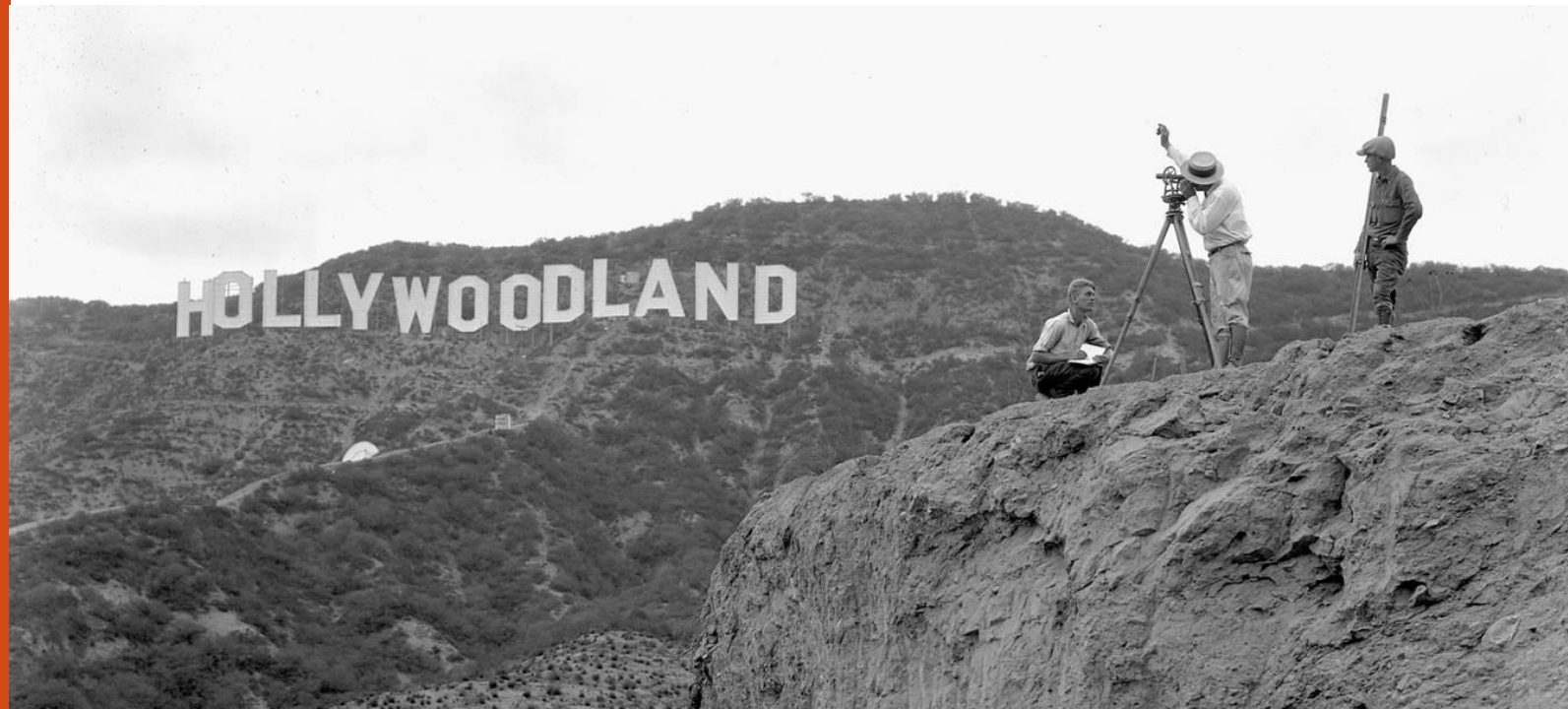


- Known as the golden age of Hollywood.
- Dominated by parent companies.
- Movies were only around 15 minutes long.
- Difficulty in distributing due to cheaply made, one-off film reel shorts.
- Companies learned it was an economic advantage to use multiple-reel films.
- They could charge more for multiple-reel films at the box office.



- Hollywood became the center for the American film industry at the start of the 1910s.
- Relocated from New York to California.
- By 1912, LA became the Capital of the film industry.
- European film industry devastated due to World War 1
- Hollywood replaced Europe as the most popular film industry in the world

HISTORY OF HOLLYWOOD





**THE
END**

